



Main (current)

Measurements & Points

Extracting & Surface generation

3D view

2D views

Library

Manuels & Tutorials

**K** Keyboard Shortcuts

Main Picking Extraction

Data

Loaded Datasets

Datasets

- CT Cardio CHN (75.0%)

Visualization Settings

3D Visualizations

- Airy
- Contrast
- Muscles
- Muscle Bones
- Default

3D Visualization Settings

Level: 125.0

Width: 250.0

2D Visualization Settings

Level: 60.0

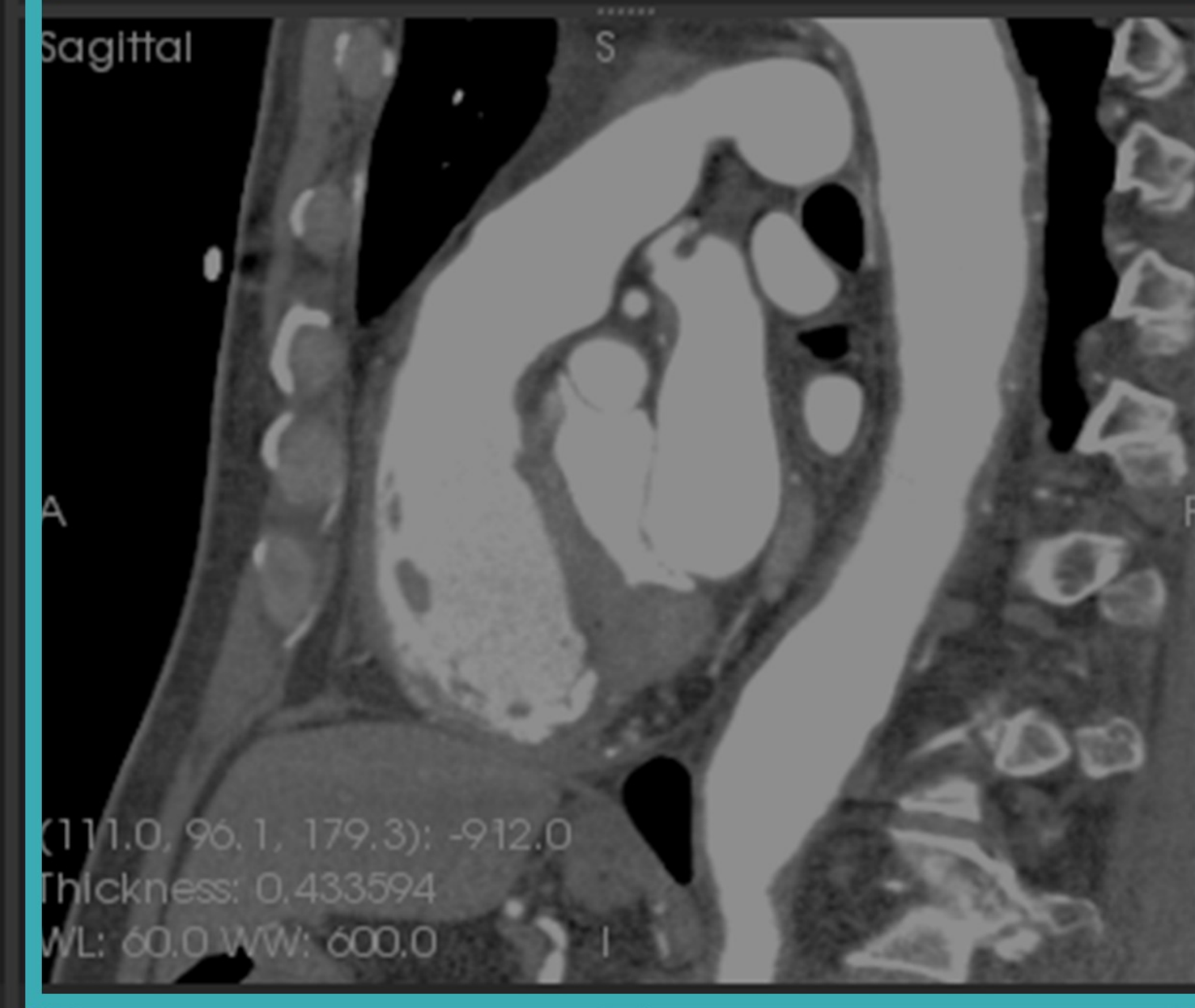
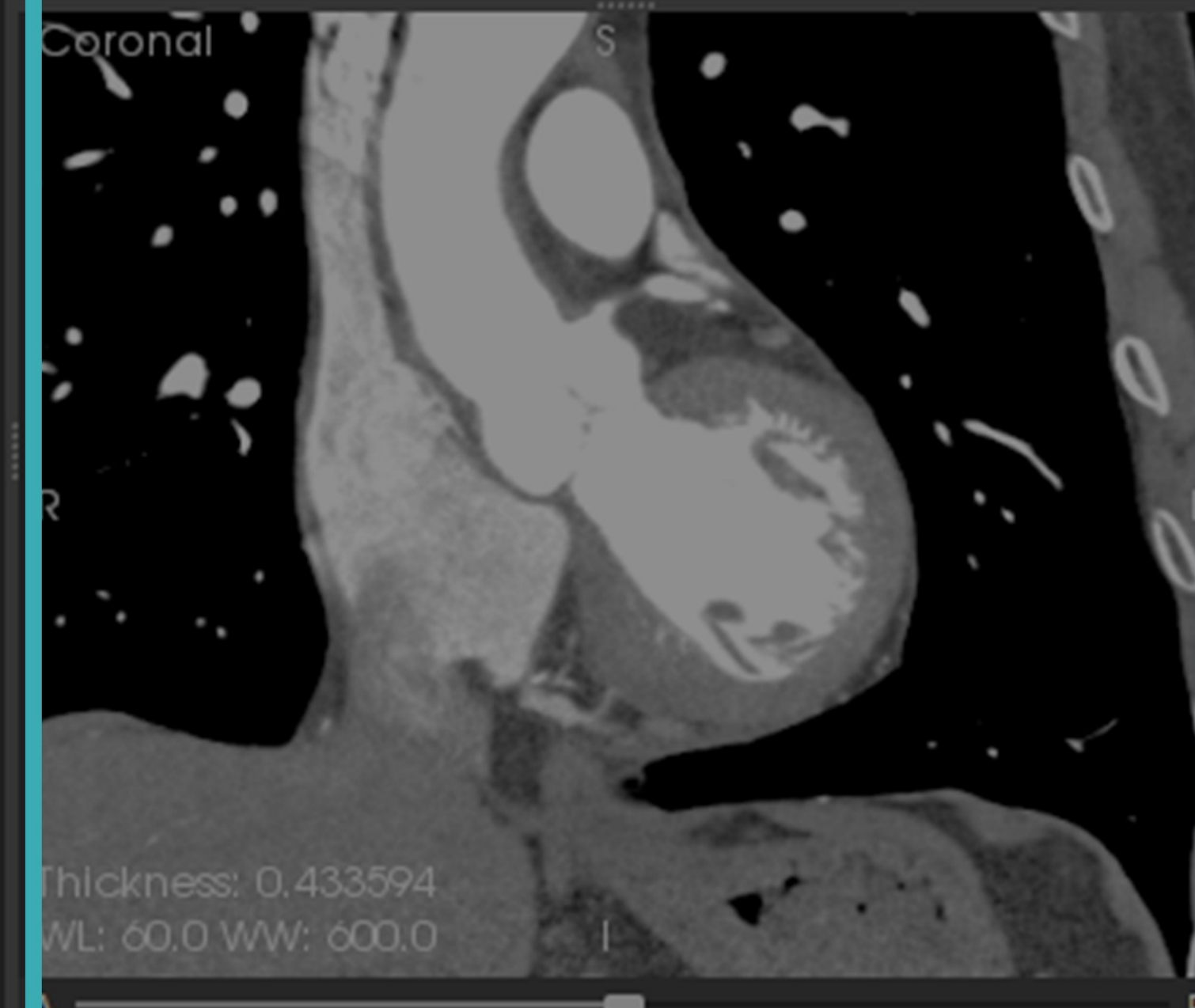
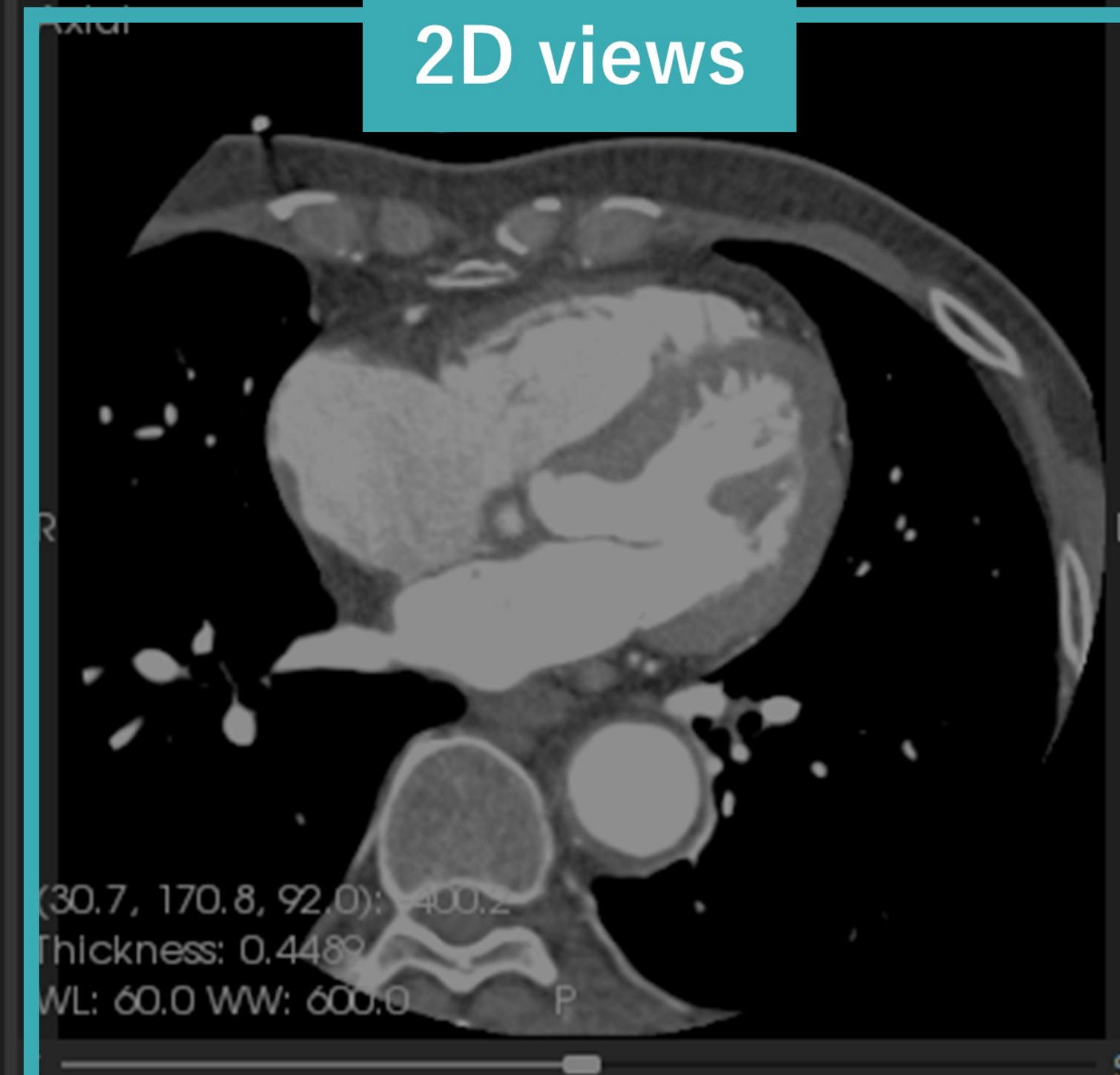
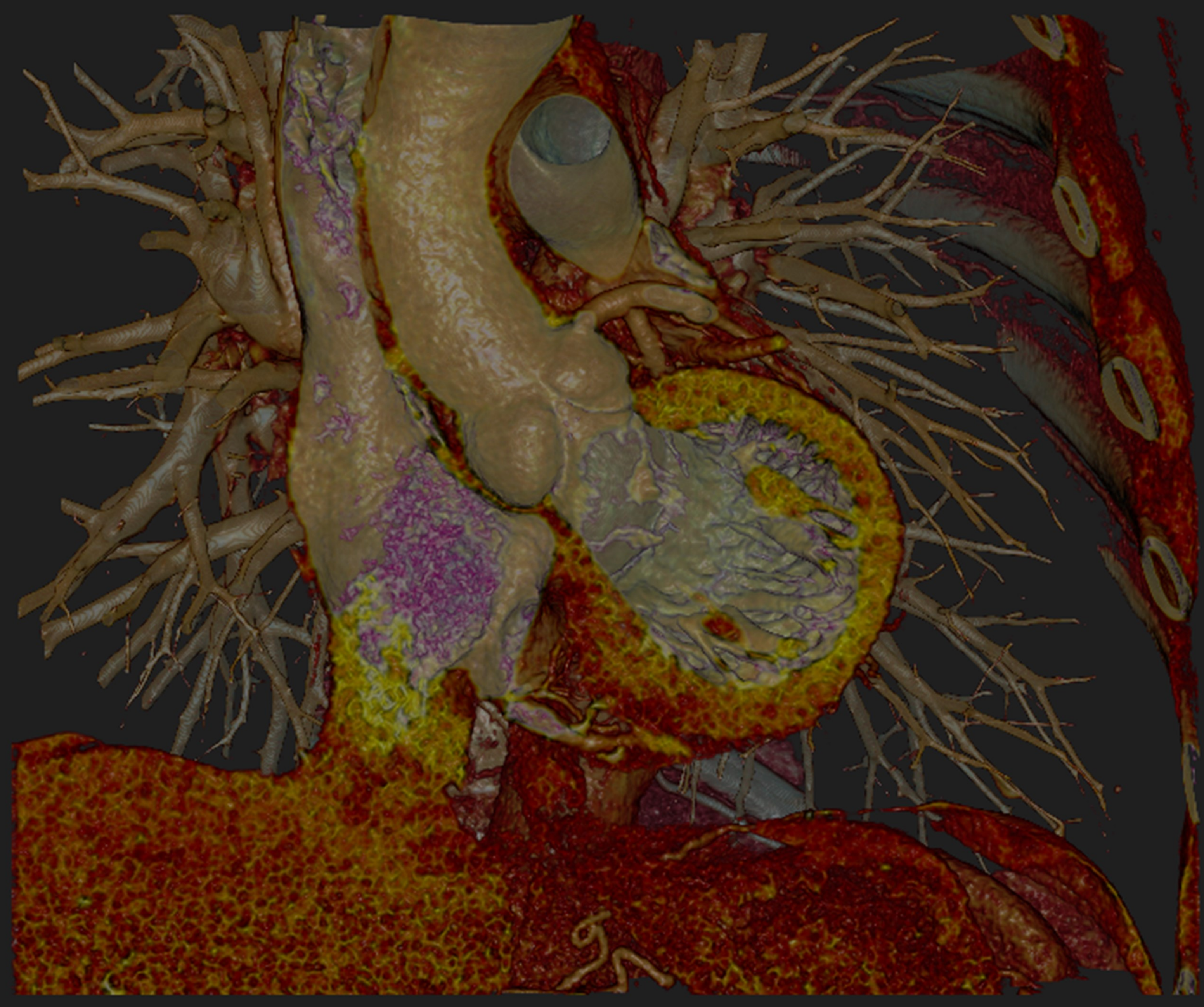
Width: 600.0

Cropping

Orthogonal Planes

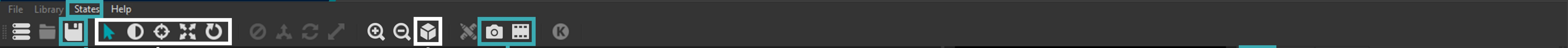
R L A P I S

Oblique Planes



Orientation

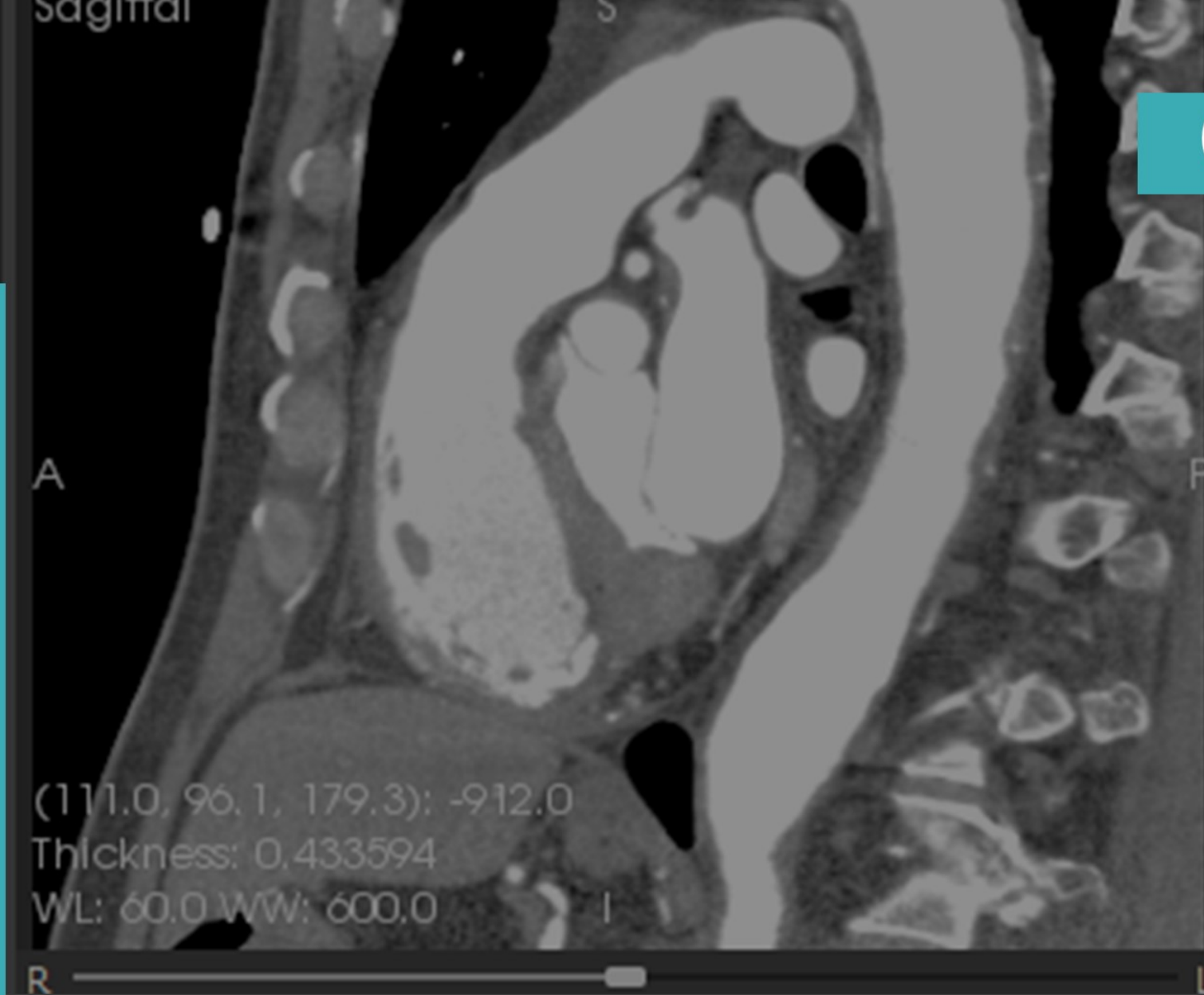
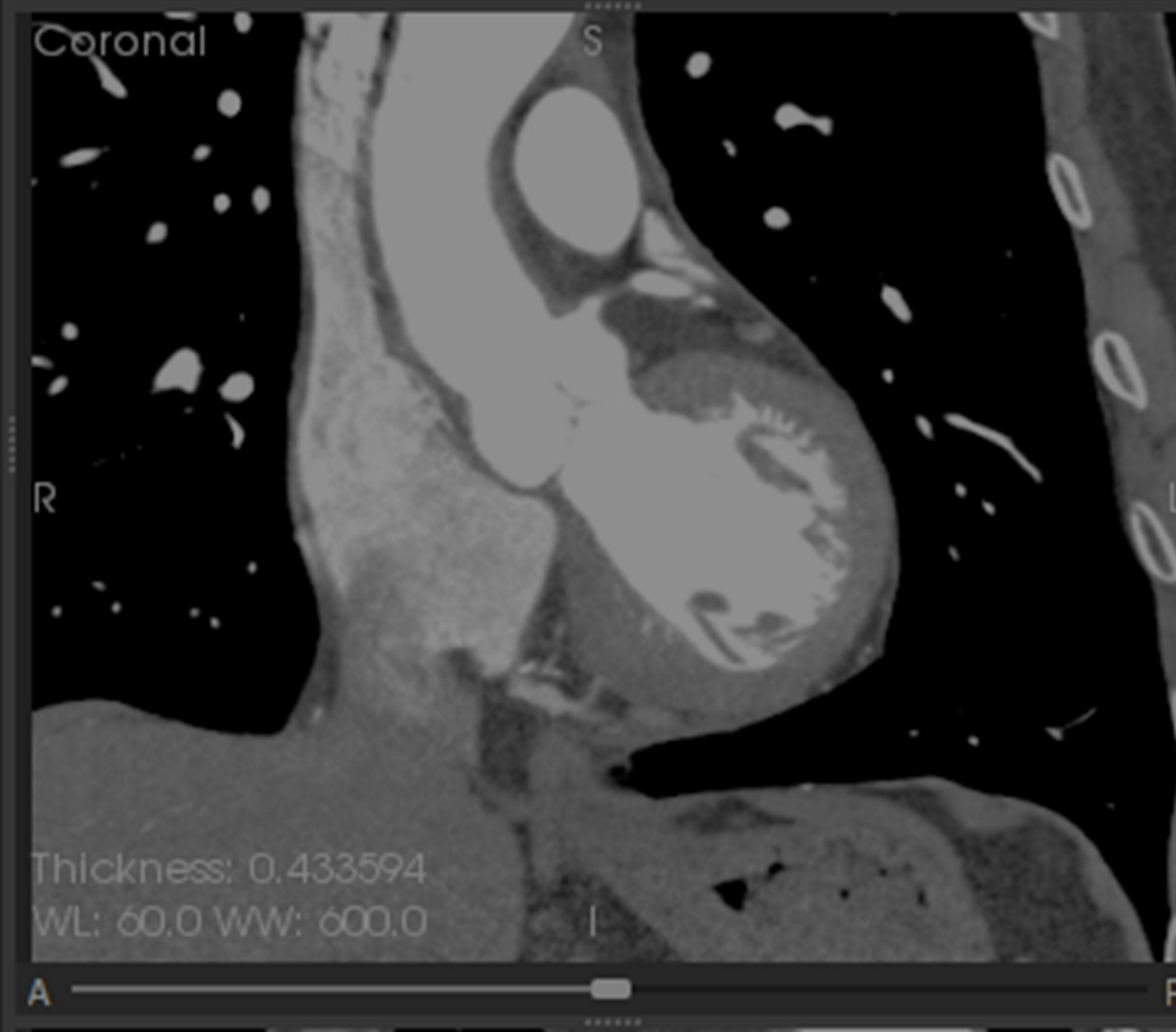
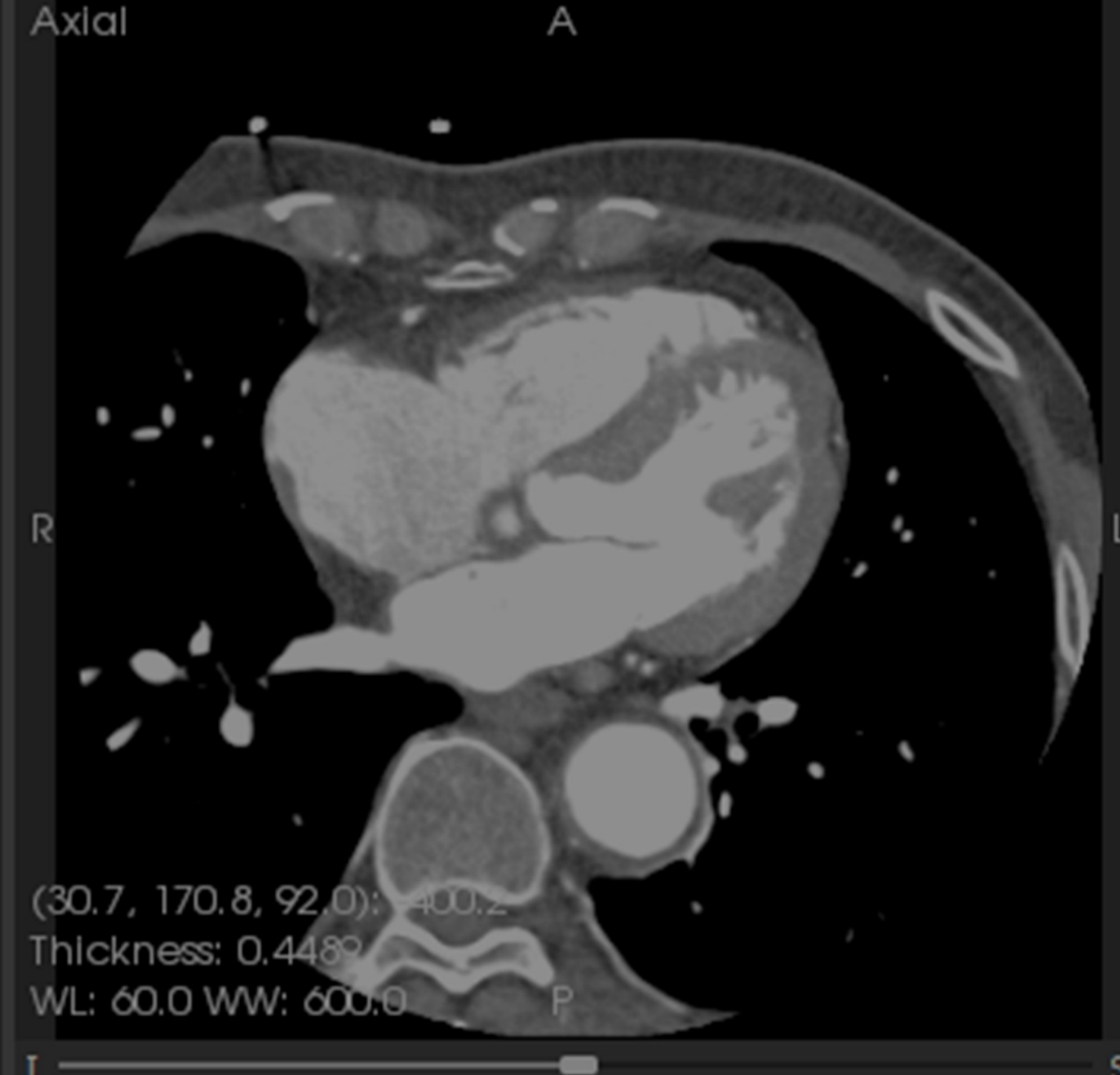
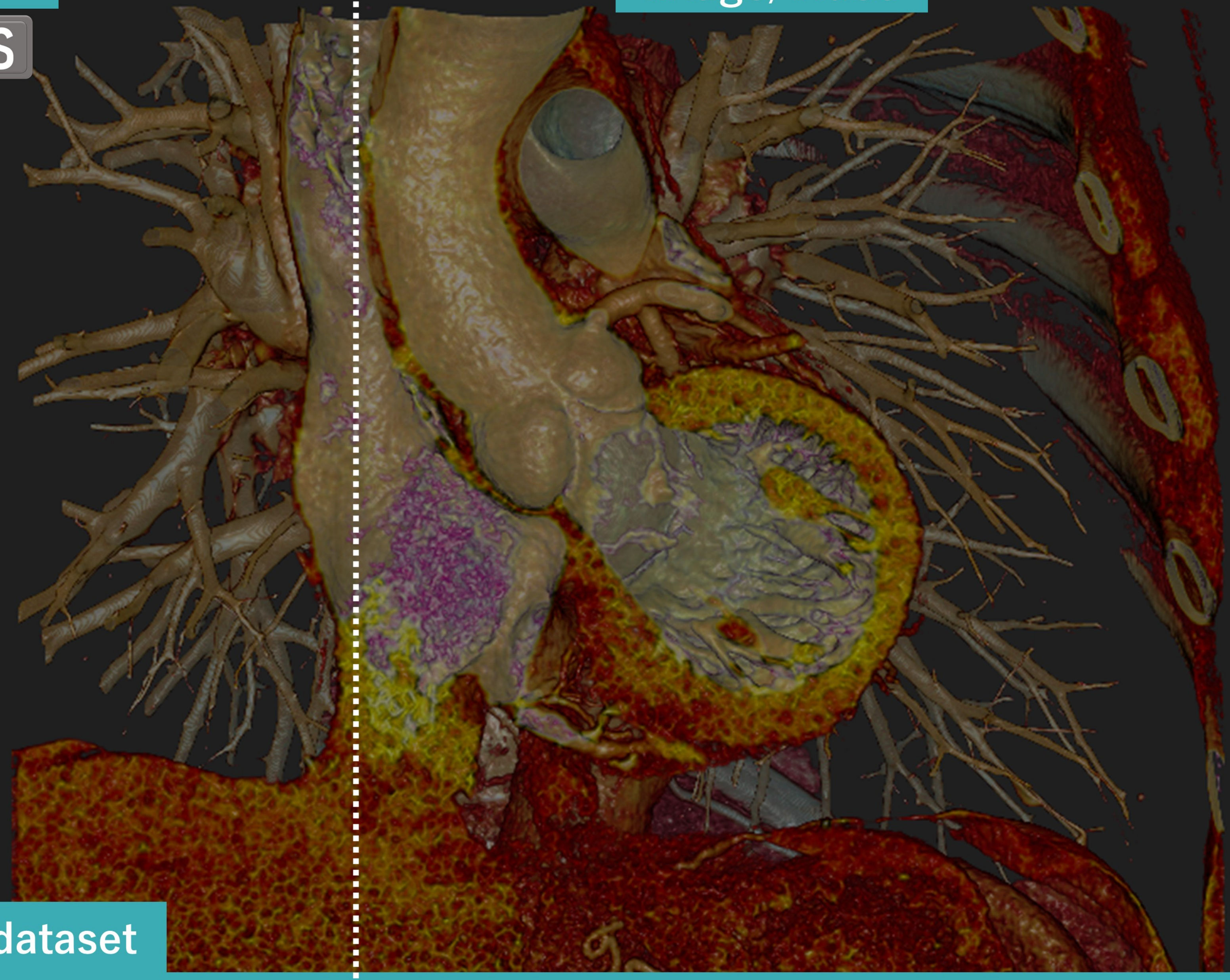
**A**



Save Current State

CTRL + S

Capture image/video



Main Picking Extraction

Data

Datasets

- CT Cardio CHN (75.0%)

Visualization Settings

3D Visualizations

- Airy
- Contrast
- Muscles
- Muscle Bones
- Default
- Transparent

3D Visualization Settings

Level: 125.0

Width: 250.0

2D Visualization Settings

Level: 60.0

Width: 600.0

Crop dataset

Cropping

Orthogonal Planes

- R
- L
- A
- P
- I
- S

Oblique Planes

Manipulate dataset

Rotate <b>S</b>	Drag	<b>R</b> Reset perspective
Move <b>M</b> OR <b>SHIFT</b> +	Pull/Push <b>CTRL</b> +	<b>P</b> Pick point (2D/3D)
Spin <b>C</b> OR <b>ALT</b> +		<b>W</b> Adjust window level